



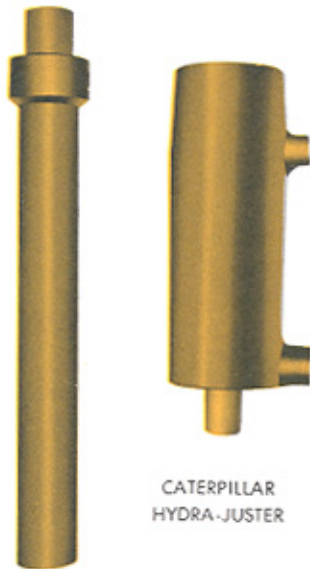
# HENDERSON MANUFACTURING COMPANY

P.O. Box 1249, 80 County Road 4310, Pittsburg, TX 75686  
Phone: 903-856-3658

Fax: 903-856-5602

www.hendersonmfgco.com

## HYDRAULIC TRACK ADJUSTER



CATERPILLAR  
HYDRA-JUSTER

NO WRENCHES

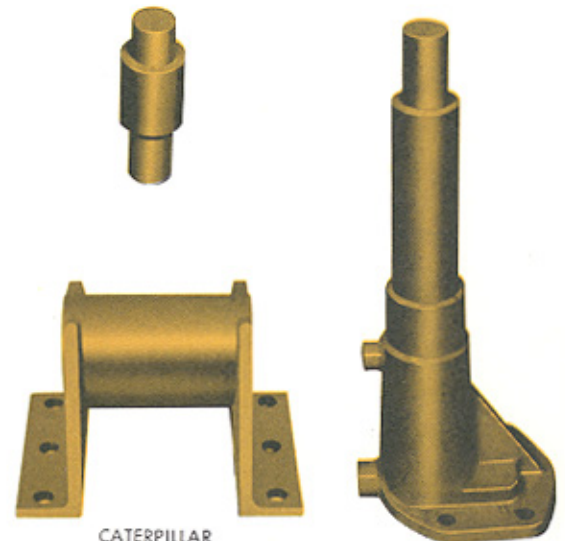
LESS DOWN-TIME

LESS MAINTENANCE COST

INCREASES LIFE OF  
UNDERCARRIAGE

MOST MODELS INSTALLED IN  
MINUTES

MANUFACTURED FOR:  
TRACTORS, SHOVELS,  
CRANES, DITCHERS, ETC.



CATERPILLAR  
HYDRA-JUSTER

### ALL HYDRA-JUSTERS EQUIPPED WITH:

CYLINDERS cast from special alloy S.A.E. steel.

Pistons and cylinders grooved for better lubrication and longer life.

A NEW 100% SAFE CHECK VALVE, BLEEDER AND FITTING ASSEMBLY.

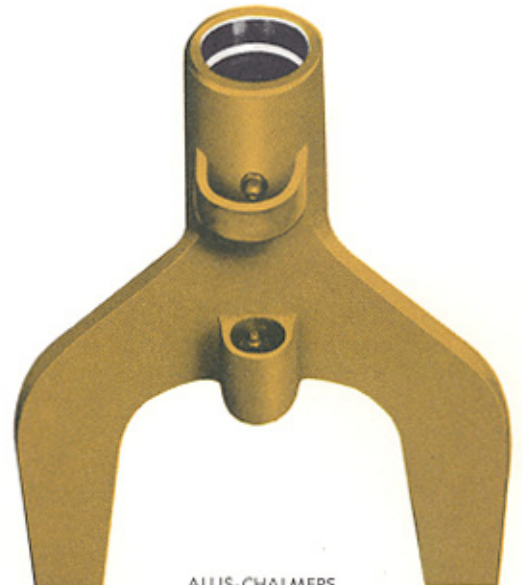
Valve assembly will bleed grease if loosened under pressure.

Check valve prevents blow out if fitting removed under pressure.

Check valve will prevent loss of grease if fitting is broken, lost or damaged.

**hydra-juster**  
PATENT NO. RE 24126

PROTECTED BY U.S.A. AND FOREIGN PATENTS



ALLIS-CHALMERS  
HYDRA-JUSTER

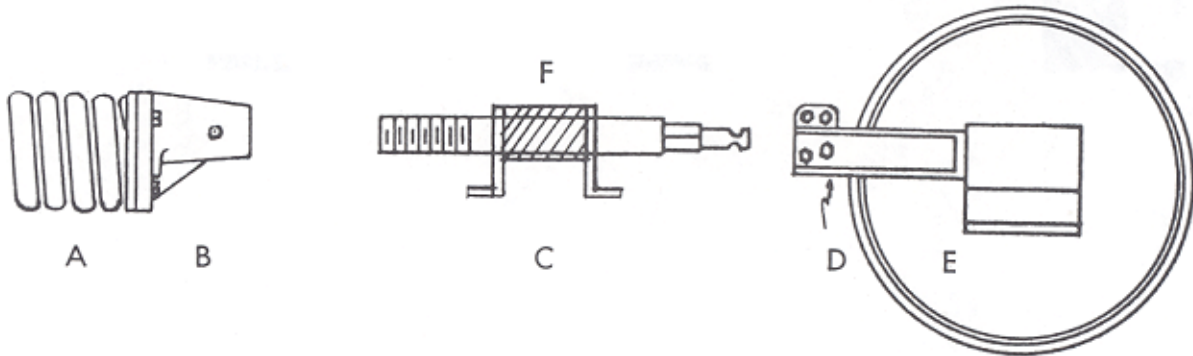


# HENDERSON MANUFACTURING COMPANY

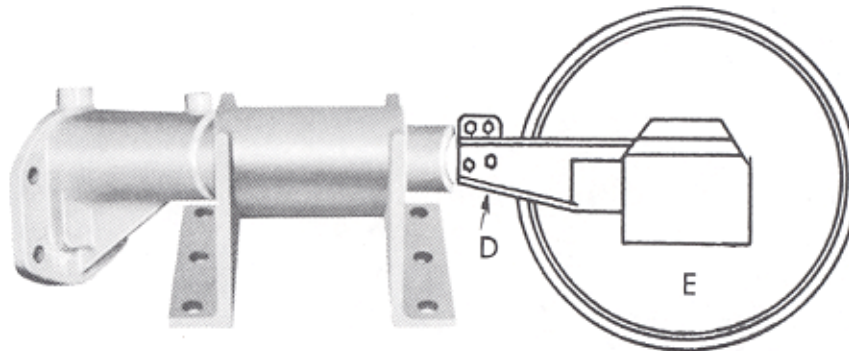
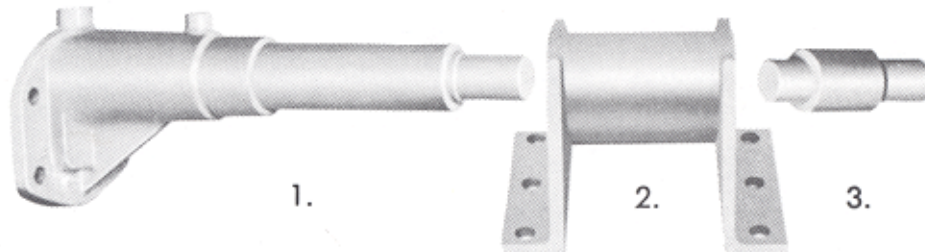
P.O. Box 1249, 80 County Road 4310, Pittsburg, TX 75686  
Phone: 903-856-3658

www.hendersonmfgco.com

## HYDRA-JUSTER INSTALLATION for D-6 and D-7 CATERPILLAR TRACTORS



Mechanical adjuster



### Legend for top picture

- A. Recoil spring
- B. Adjusting screw retainer
- C. Adjusting screw
- D. Idler arms
- E. Idler
- F. Spring guide assy.

### Legend for middle picture

- 1. Hydra-Juster cylinder
- 2. Hydra-Juster spring guide
- 3. Hydra-Juster extension used on 604 only after serial #'s 8U10785 — 9U28328

### Legend for bottom picture

- 1. Hydra-Juster assembled on tractor.

NOTE: Model # 711 spring guide are right and left handed due to lug on inside of bracket. Special spring guide must be used on # 711 and # 604 Hydra-Juster.

### INSTRUCTIONS:

1. Break the tracks and move idler forward (E).
2. Remove adjusting screw (c), spring guide (F) and adjusting retainer nut (B).
3. Bolt Hydra-Juster in front of recoil spring (A).
4. Install special spring guide over end of cylinder and bolt to frame.
5. Move idler into position and buckle tracks.

HYDRA-JUSTER Model # 711 replaced Model B8V for D-7, Model # 604 replaced Model C8V for D-6. Model B8V bore is 27/16" uses HV-4 Seal; Model 711 bore is 2 3/4" uses HV-11 seal; Model 604 bore is 27/16" uses HV-4 Seal.



# HENDERSON MANUFACTURING COMPANY

P.O. Box 1249, 80 County Road 4310, Pittsburg, TX 75686

Phone: 903-856-3658

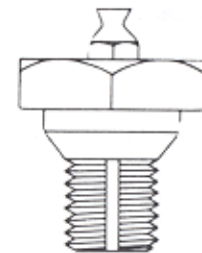
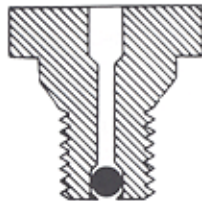
Fax: 903-856-5602

www.hendersonmfgco.com

## Fiat-Allis HYDRA-JUSTER

EASIER TO INSTALL  
CYLINDER OF S.A.E. STEEL

LARGER UNIT --- LONGER LIFE  
NO WELDING NECESSARY



A NEW 100% SAFE CHECK VALVE, BLEEDER AND FITTING ASSEMBLY

### INSTRUCTIONS ANY TRACK LENGTH

1. Break track and remove idler yoke and adjusting screw as a unit.
2. Measure overall length of yoke and adjusting screw.
3. Remove adjusting screw and insert in hole in Hydra-Juster piston.
4. Cut off threaded end of adjusting screw (if necessary) 3/4-inch shorter than No. 2 measurement.
5. Place adjuster and screw in track as an assembly and buckle track.
6. Loosen bleeder one turn, grease rear fitting thoroughly. Tighten tracks by pumping up forward fitting. Operate tractor until all air is bled from cylinder. Close bleeder valve and adjust track to proper tension.

### MODEL NUMBERS

- No. 56 Fits HD-5, 6, 6G, & 7G  
No. 67 Fits HD-6, 6G, & 7G ALL  
No. 11 Fits HD-11, HD11E ALL  
No. 1516 Fits HD-15, HD-16, & HD-16D  
No. 21 Fits HD-21, HD21B

**hydra-juster**  
PATENT NO. RE 24126

PROTECTED BY U.S.A. AND FOREIGN PATENTS

